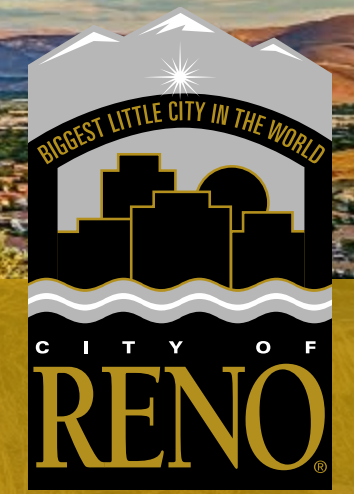




# CAD-2-CAD Updates

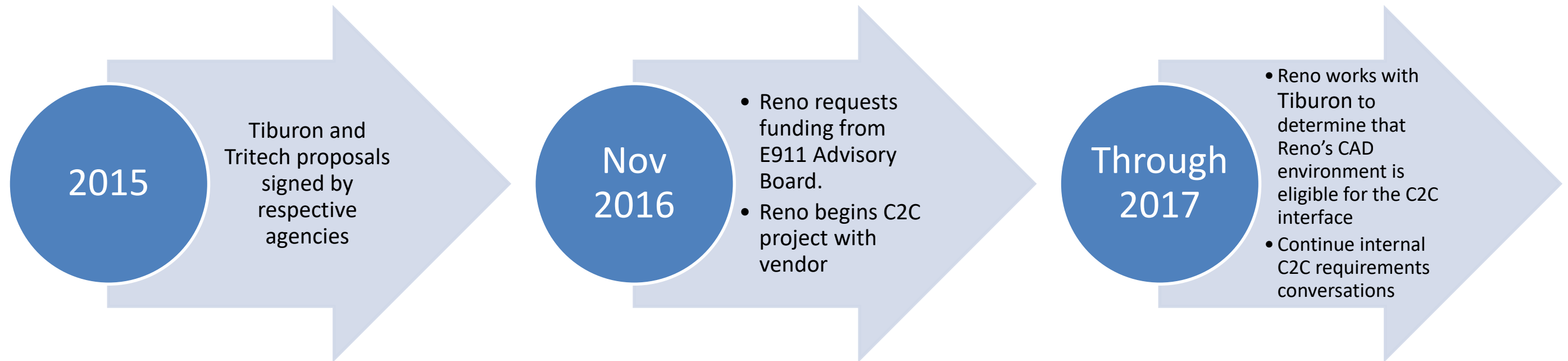
*By Rishma Khimji, Director of Technology*



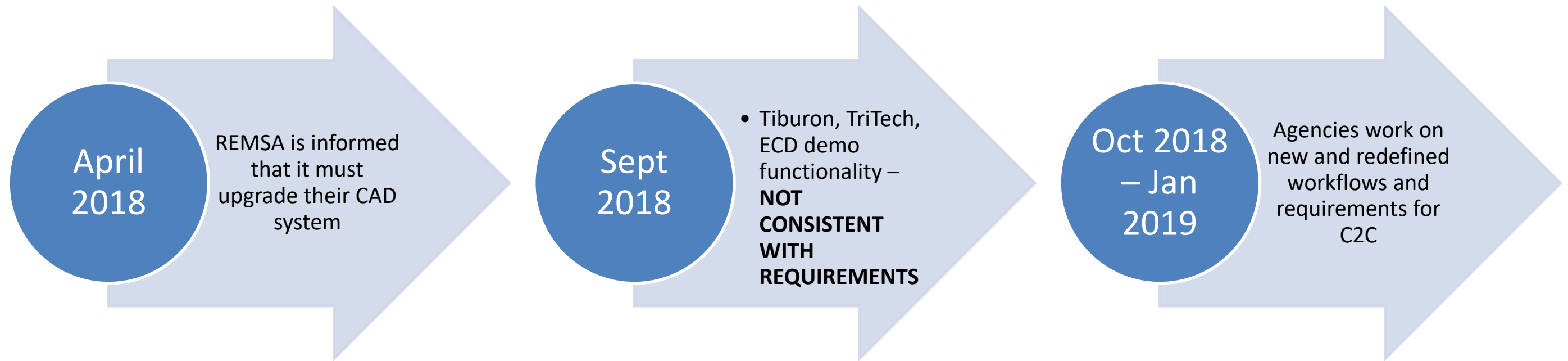
# What is CAD-to-CAD

- As part of the EMSAB strategic plan and REMSA Franchise Agreement
- Review of CAD workflow found that Dispatch had to manually transfer calls to REMSA
- CAD-to-CAD Vision between Agency Dispatch and REMSA Dispatch:
  - Share call information
  - Keep patient information secure and private
  - Only basic/necessary information allowed to pass through the interface
  - There will still be separate run/case numbers but there should be a reference link that will connect the call between different response agencies
  - Information shared should be standardized

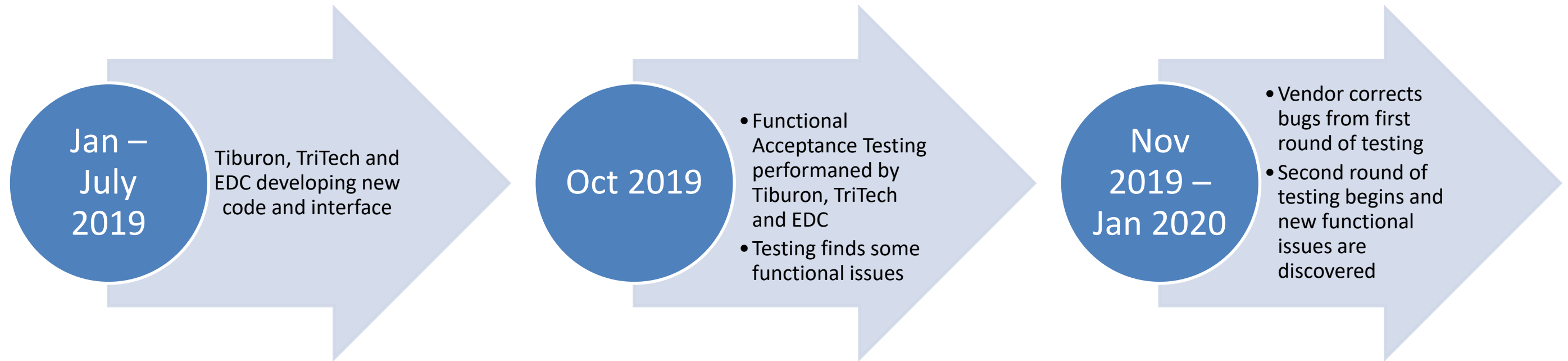
# C2C History



# C2C History



# C2C History



# Where are we now?

- Working with vendors on the new functional issues discovered
  - No works around
  - The functional issues are a major roadblock
- Options
  1. Continue to work with the vendors
    - Due to new issues, no fixed Go-Live date
  2. Begin looking at other streamlined EMS Delivery services

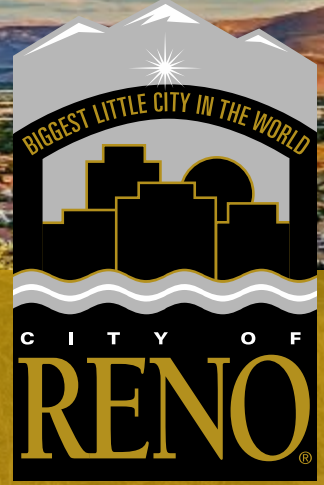
Questions? Discussion?





# AVL & Calculated Routing

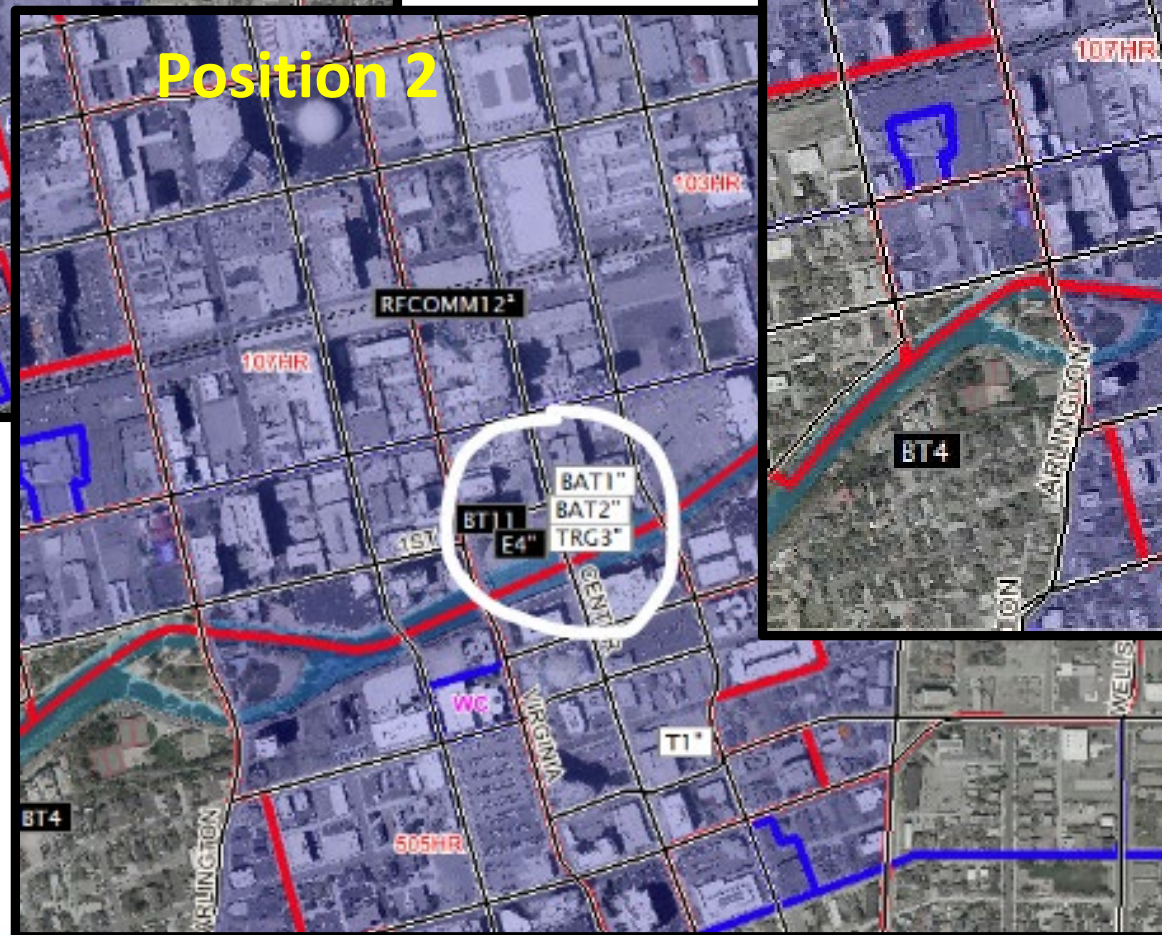
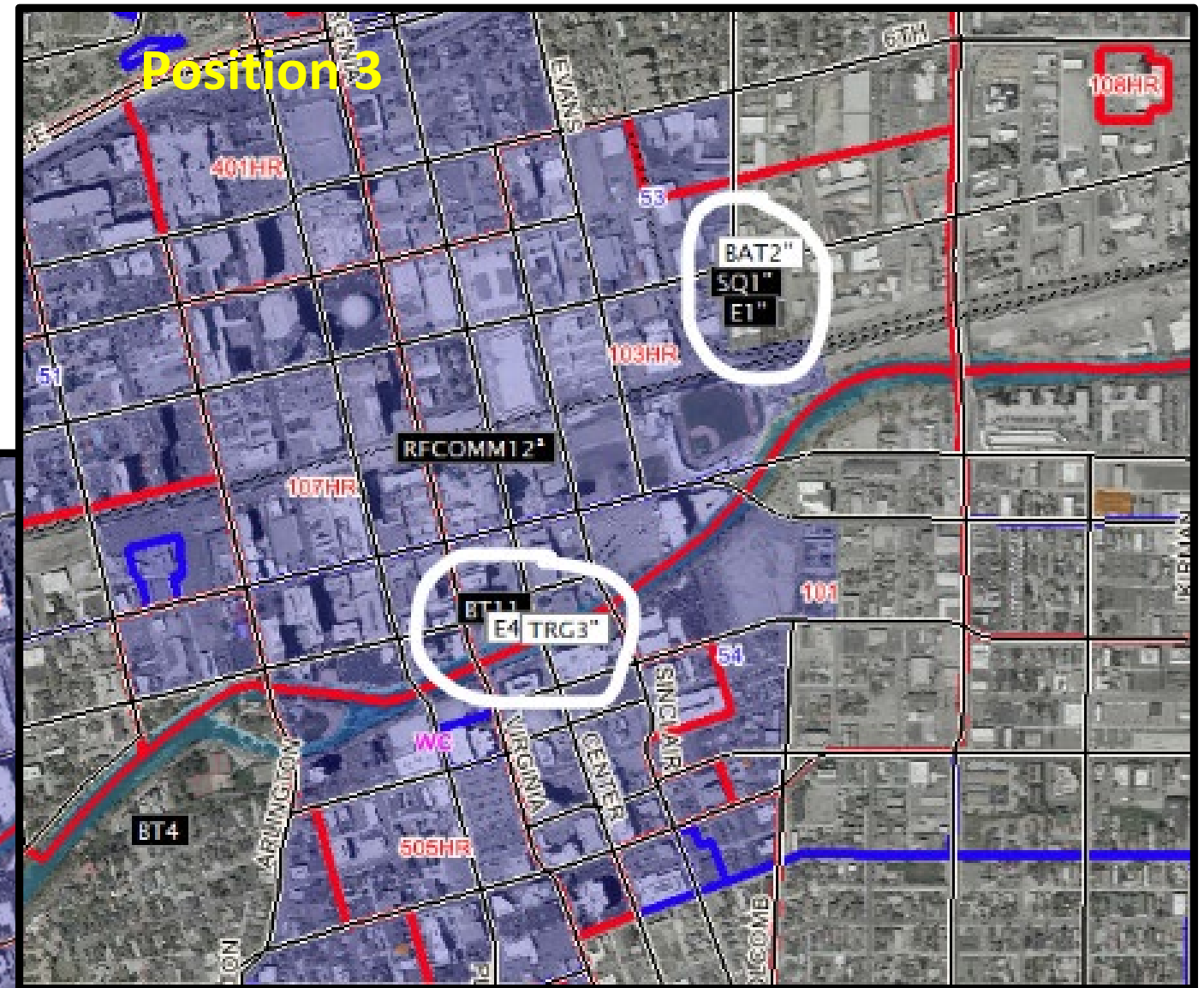
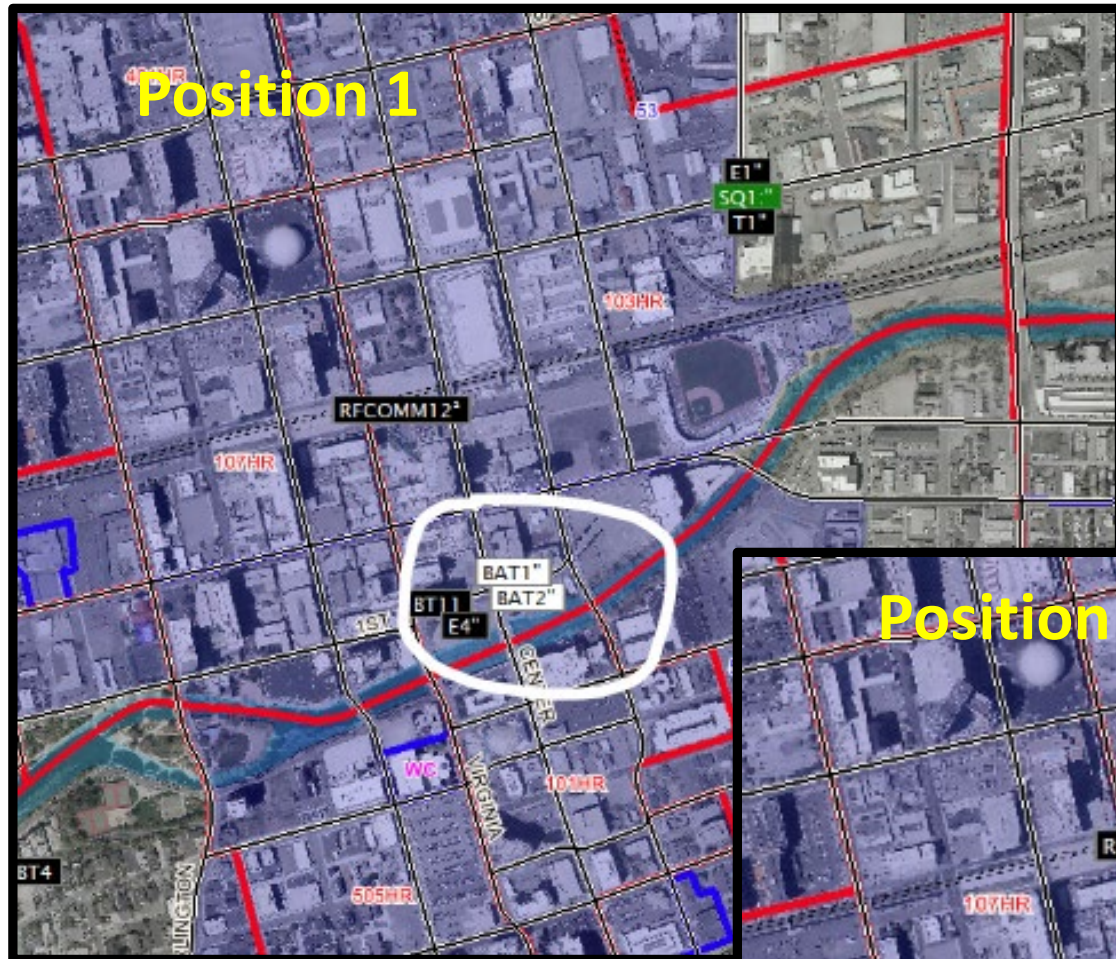
*Rishma Khimji, Director of Technology*





# What is AVL

- AVL = Automated Vehicle Location
  - General Term describes the tracking of vehicles
  - GPS based tracking
  - 5 fundamental components to AVL
    1. Hardware – A tracker device on a vehicle, **a mobile device**, or a **fixed device installed in a vehicle** (i.e. modem)
    2. Connectivity – Radio, WiFi, Satellite, **Cellular**
    3. Data Interoperability Server – translate the GPS data into readable data
    4. GIS Platform – resolve the GPS data on a map
    5. Decision Making Software – **Computer Aided Dispatch system**



# How to make decisions using AVL

**CAD + AVL  
Data**

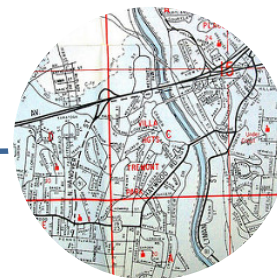
AREA..	NAT.	TAC	TIME.
RD 5-6	HF	6D	18:54
SW-LB #D 1-10	10C1	6B	17:33
ST W-MB 3-9	FILL	6B	17:11
DR-AB #117 23-2	FILL	6B	16:24
DR-CH 19-2	FILL	6B	15:26
MOSBY HWY-AL 7-11	FILL	6B	14:29
HWY-MB/SALLS R 7-6	HF	6C	14:10
NE-LB 1-9			18:55



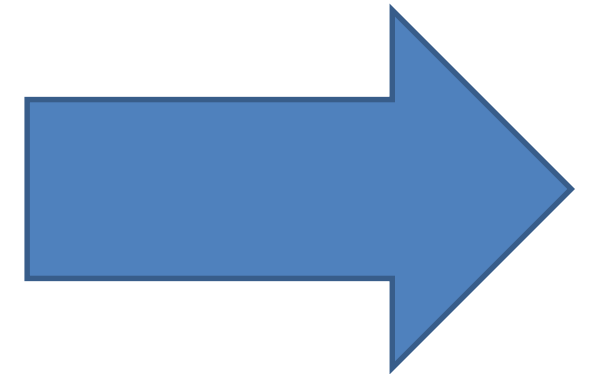
Unit Type(s)  
Required,  
Response  
Recommendation



Call Type,  
Priority, Call  
Location,  
Response  
Plan



Recommended  
Units' Last  
Location



# How to make decisions using AVL

Allows the CAD to automate the dispatch of the **Response Resources**



**OPTIMAL** available Unit(s) based on availability, priority, distance, skills, equipment, other required variables

# Calculated Routing Timetable

- AVL = Already available
- Configurations required:
  - CAD Upgrade: Complete
  - Map Server/Data Interoperability Server Upgrade: Complete
  - Mobile CAD Application: Regional Go-Live April 1, 2020
  - Set up of Responses, Search Parameters, Units, Priorities, etc:  
Ongoing
  - Testing: TBD



QUESTIONS?

