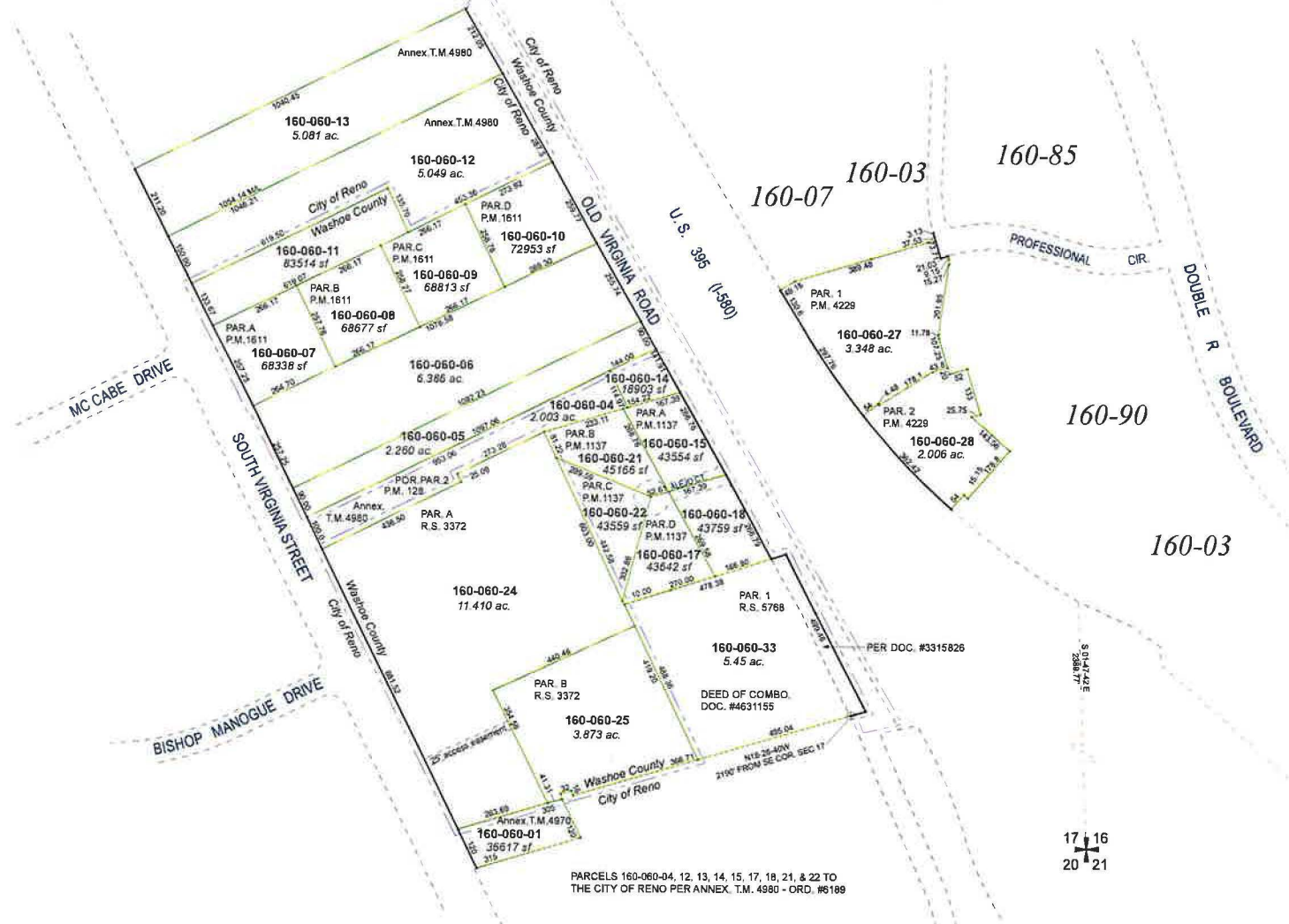


A POR. OF THE E 1/2 OF SEC. 17
T18N - R20E

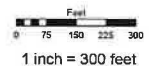


PARCELS 160-060-04, 12, 13, 14, 15, 17, 18, 21, & 22 TO THE CITY OF RENO PER ANNEX. T.M. 4980 - ORD. #6189

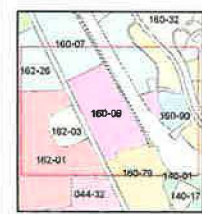
Assessor's Map Number
160-06

STATE OF NEVADA
WASHOE COUNTY
ASSESSOR'S OFFICE
Michael E. Clark, Assessor

1001 East Ninth Street
Building D
Reno, Nevada 89512
(775) 328-2231



1 inch = 300 feet



created by: CFB 06/10/2009
last updated: SR 09/26/16

area previously shown on map(s)
022-27 160-03

NOTE: This map was prepared for the use of the Washoe County Assessor for assessment and illustrative purposes only. It does not represent a survey of the premises. No liability is assumed as to the sufficiency or accuracy of the data delineated hereon.

17 | 16
20 | 21