

SETBACK SUMMARY

- FRONT DOOR 10.0 FEET MINIMUM FROM STRUCTURE TO PROPERTY LINE OR RIGHT OF WAY
- GARAGE SIDE 20.0 FEET MINIMUM FROM GARAGE TO PROPERTY LINE OR RIGHT OF WAY
- 7.0 FEET MINIMUM TO ANY SECOND STORY BALCONY OR OVERHANG
- SIDE YARD 0.0 FEET

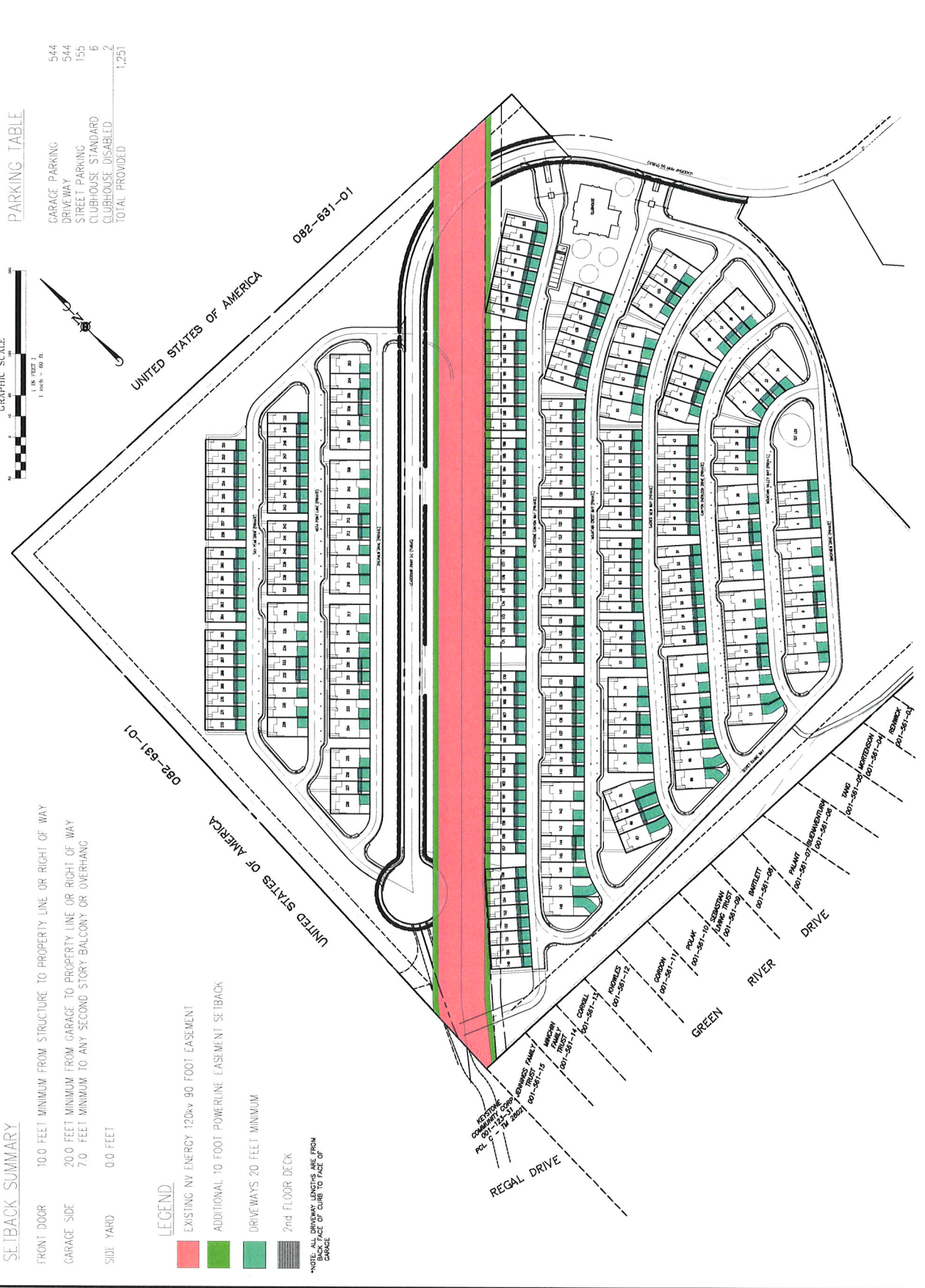
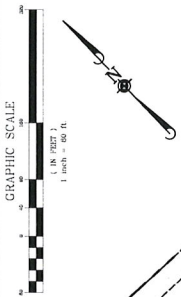
LEGEND

- EXISTING NV ENERGY 120kv 90 FOOT EASEMENT
- ADDITIONAL 10 FOOT POWERLINE EASEMENT SETBACK
- DRIVEWAYS 20 FEET MINIMUM
- 2nd FLOOR DECK

*NOT ALL SETBACKS ARE FROM BACK OF CURB TO FACE OF GARAGE

PARKING TABLE

GARAGE PARKING	544
DRIVEWAY	544
STREET PARKING	155
CLUBHOUSE STANDARD	6
CLUBHOUSE DISABLED	2
TOTAL PROVIDED	1,251



THE OVERLOOK AT KEYSTONE CANYON
 RENO, NEVADA
 DRIVEWAY AND SETBACK EXHIBIT

DATE: 11/15/2023
 DRAWN BY: JACOB
 CHECKED BY: JACOB
 SHEET: 1 OF 1
 STANDARD



DATE	11/15/2023
DRAWN BY	JACOB
CHECKED BY	JACOB
SHEET	1 OF 1