

# ESPLANADE AT NORTHGATE

## TYPICAL FLOOR PLANS

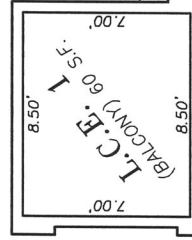
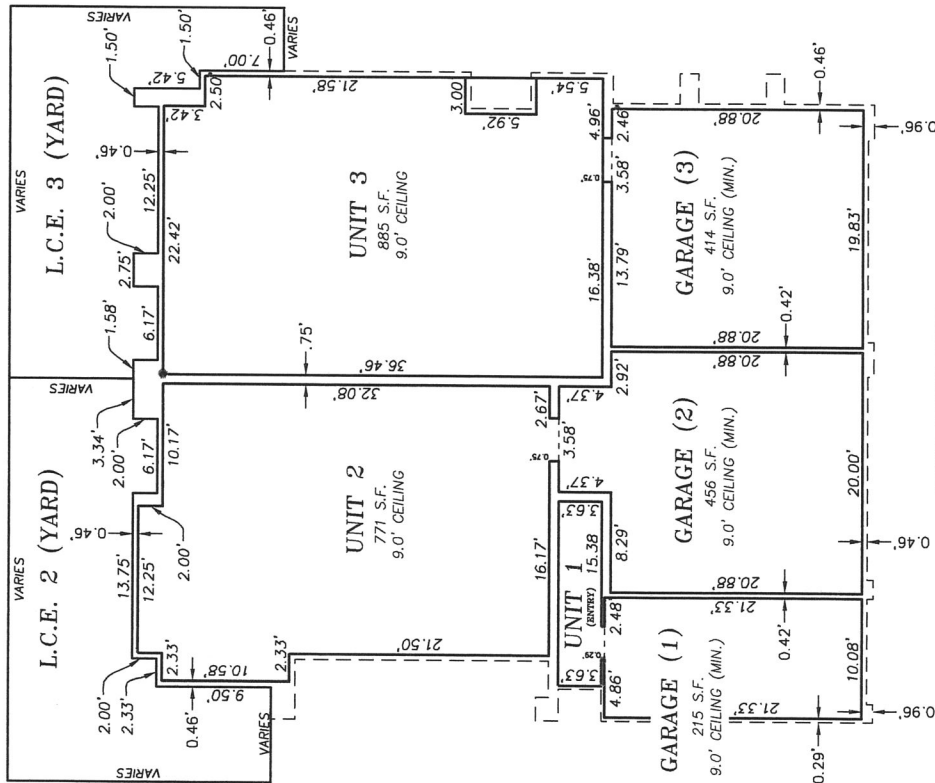
RENO, NEVADA  
AUGUST 2017

### DETAIL NOTES:

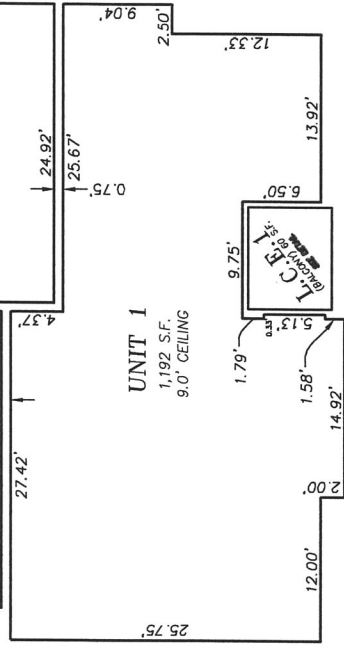
1. ALL BUILDING PROPERTY LINES ARE PERPENDICULAR.
2. ALL INTERIOR AND EXTERIOR WALLS ARE 0.46" (5/8") WIDE UNLESS OTHERWISE NOTED.
3. ALL INTERIOR DOUBLE WALLS ARE 0.75" (3/4") WIDE UNLESS OTHERWISE NOTED.
4. UNIT DIMENSIONS AS SHOWN ON THIS SHEET ARE TO INSIDE OF WALLS.
5. TOTAL UNIT AREA AS SHOWN ON THIS SHEET INCLUDES GARAGE AREA AND UNIT ENTRY AREA, IF APPLICABLE.

### TOTAL AREAS

UNIT 1 = 1,484 S.F.  
UNIT 2 = 2,062 S.F.  
UNIT 3 = 2,199 S.F.



### TYPICAL SECOND FLOOR PLAN



**WOOD RODGERS**  
BUILDING RELATIONS ONE PROJECT AT A TIME  
1981 Corporate Blvd  
Fremont, NV 89424  
Tel: 775.888.4088  
Fax: 775.888.4089