

239, 241, 245 & 247 Linden Street







15-34

15-26

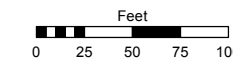
15-28

Assessor's Map Number

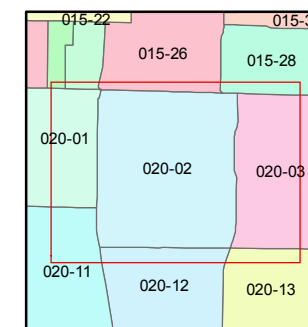
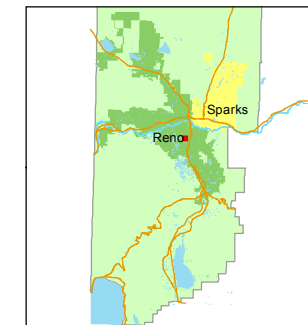
020-02

STATE OF NEVADA
WASHOE COUNTY
ASSESSOR'S OFFICE
Joshua G. Wilson, Assessor

1001 East Ninth Street
Building D
Reno, Nevada 89512
(775) 328-2231



1 inch = 100 feet

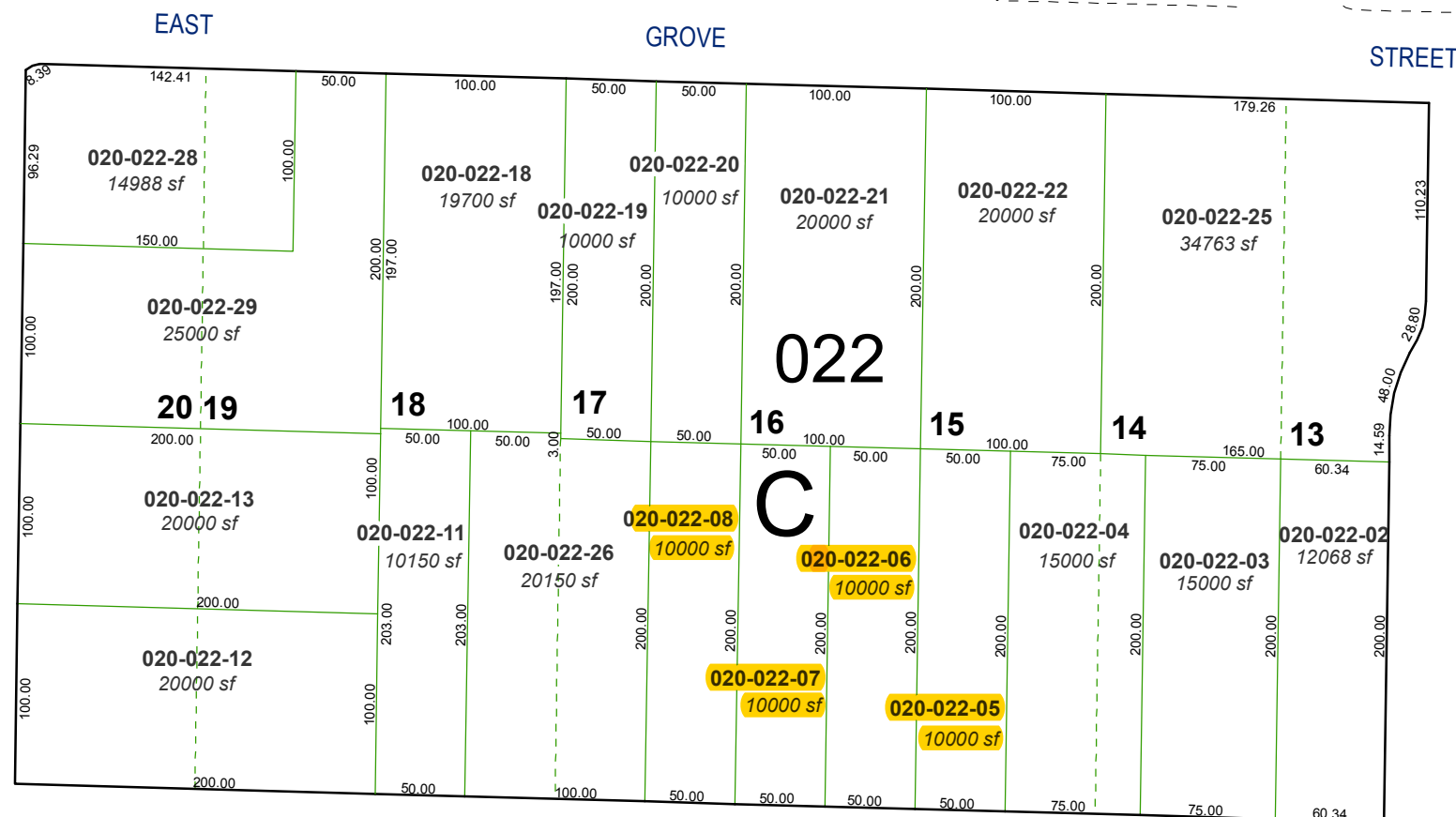


created by: CFB 03/21/2013

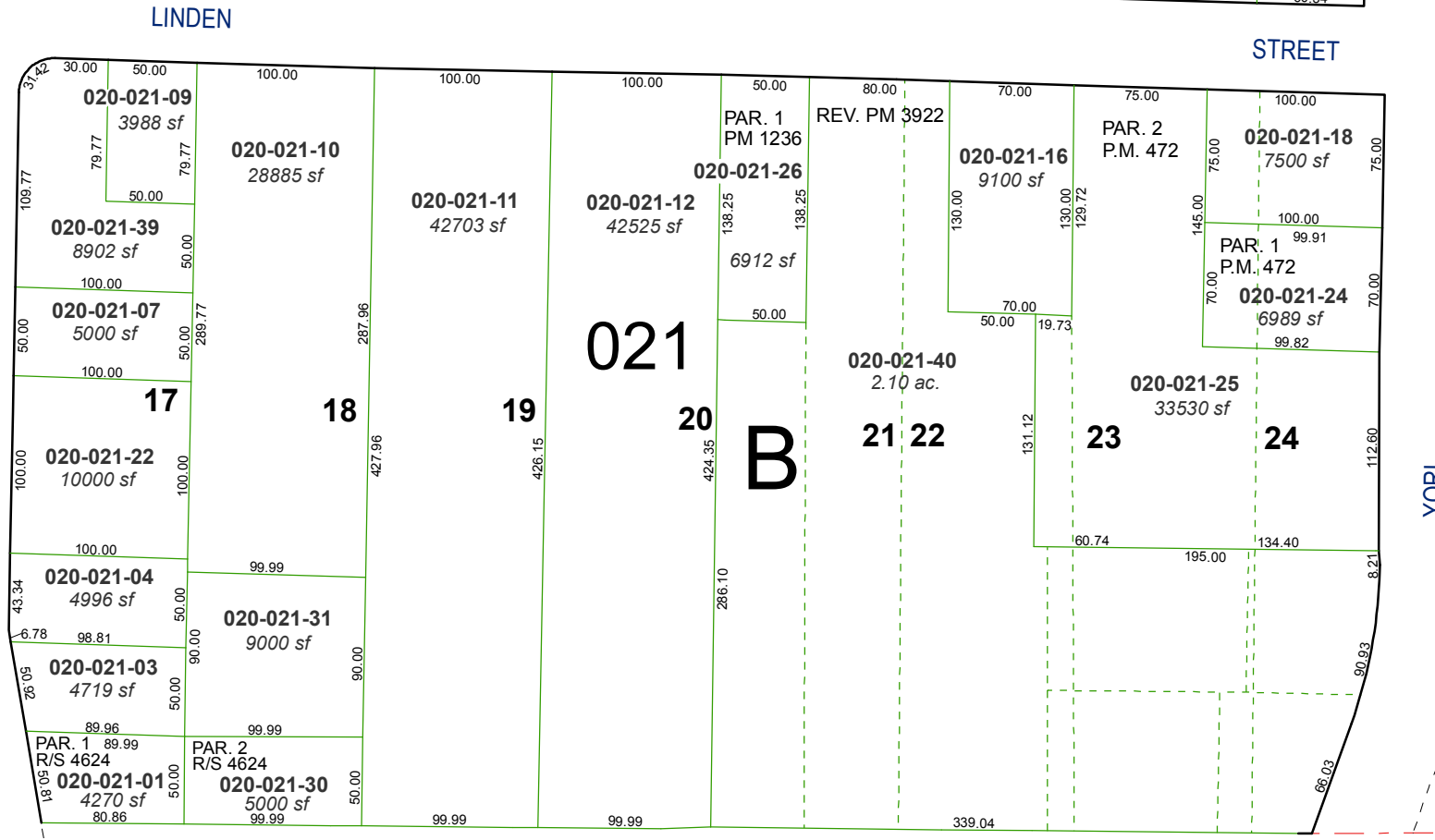
last updated:

area previously shown on map(s)

NOTE: This map was prepared for the use of the Washoe County Assessor for assessment and illustrative purposes only. It does not represent a survey of the premises. No liability is assumed as to the sufficiency or accuracy of the data delineated hereon.



(UNOFFICIAL)
HILLBRAE TRACT
PORTION OF NE 1/4 OF SEC. 24
T19N - R19E



20-03

20-13

LINDEN STREET

20-01

HUBBARD WAY

20-11

20-12

WAY

EAST

GROVE

STREET

AVENUE

STREET

WRONDEL

LINDEN

YORI