

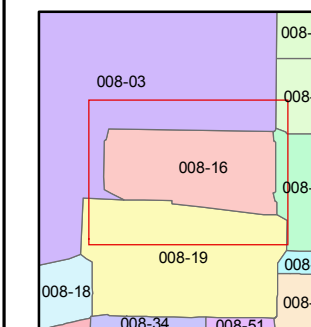
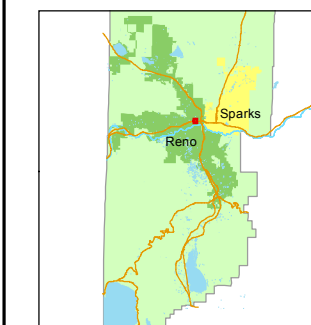
(#58)
LEETE SYNDICATE ADDITION
 PORTION OF THE SW 1/4 OF SECTION 1
 T19N - R19E

STATE OF NEVADA
WASHOE COUNTY
ASSESSOR'S OFFICE
 Michael E. Clark, Assessor

1001 East Ninth Street
 Building D
 Reno, Nevada 89512
 (775) 328-2231



1 inch = 100 feet

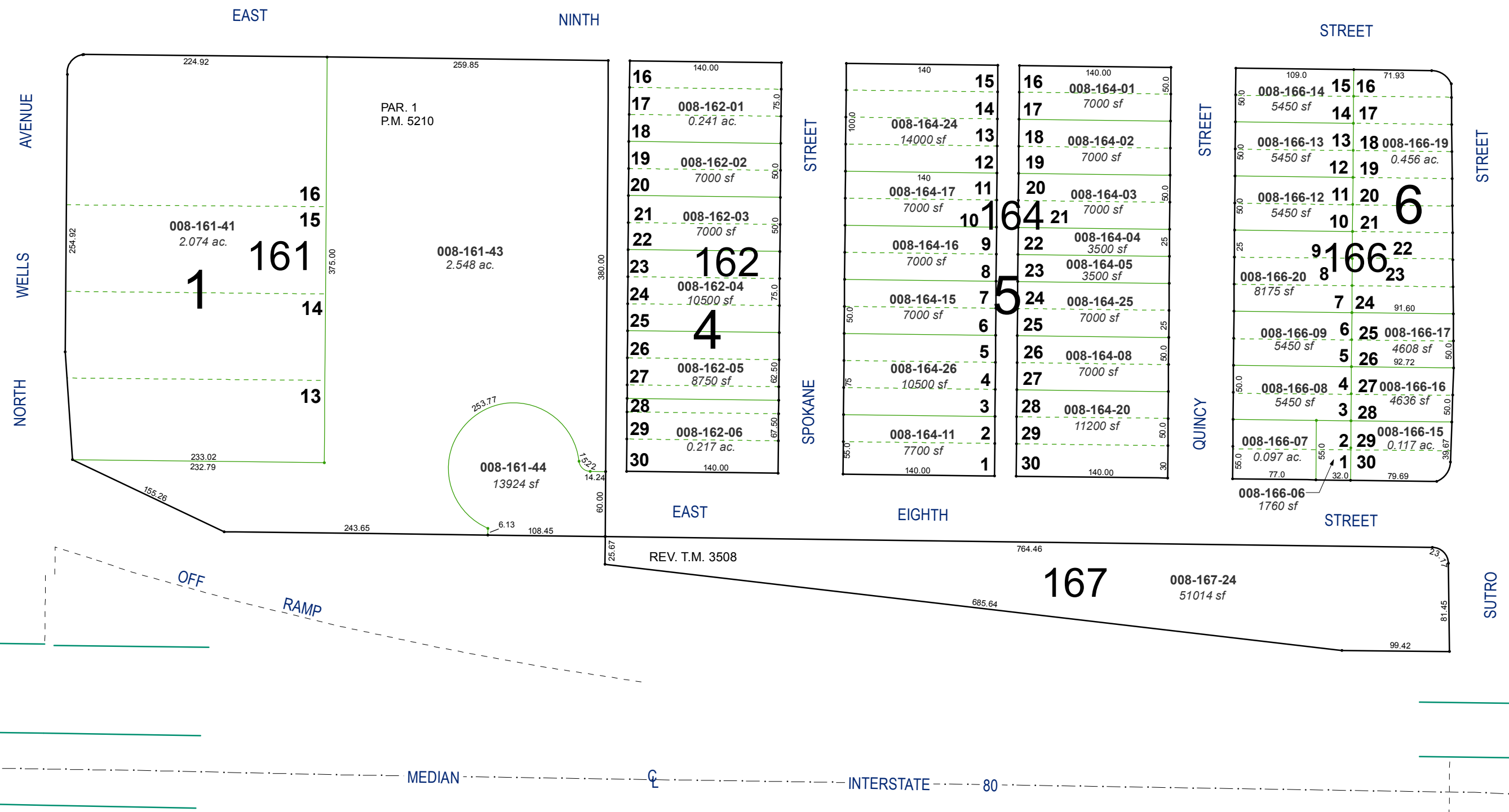


created by: TWT 10/9/2012

last updated: CFB 01/21/2016

area previously shown on map(s)

NOTE: This map was prepared for the use of the Washoe County Assessor for assessment and illustrative purposes only. It does not represent a survey of the premises. No liability is assumed as to the sufficiency or accuracy of the data delineated hereon.



REV. T.M. 3508

167

008-167-24
51014 sf

MEDIAN INTERSTATE 80