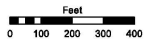


Assessor's Map Number

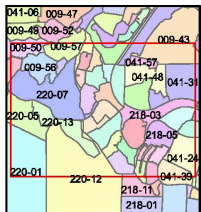
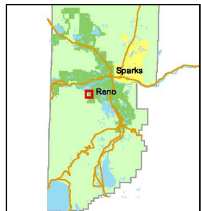
220-08

STATE OF NEVADA
WASHOE COUNTY
ASSESSOR'S OFFICE
Michael E. Clark, Assessor

1001 East Ninth Street
Building D
Reno, Nevada 89512
(775) 328-2231



1 inch = 400 feet



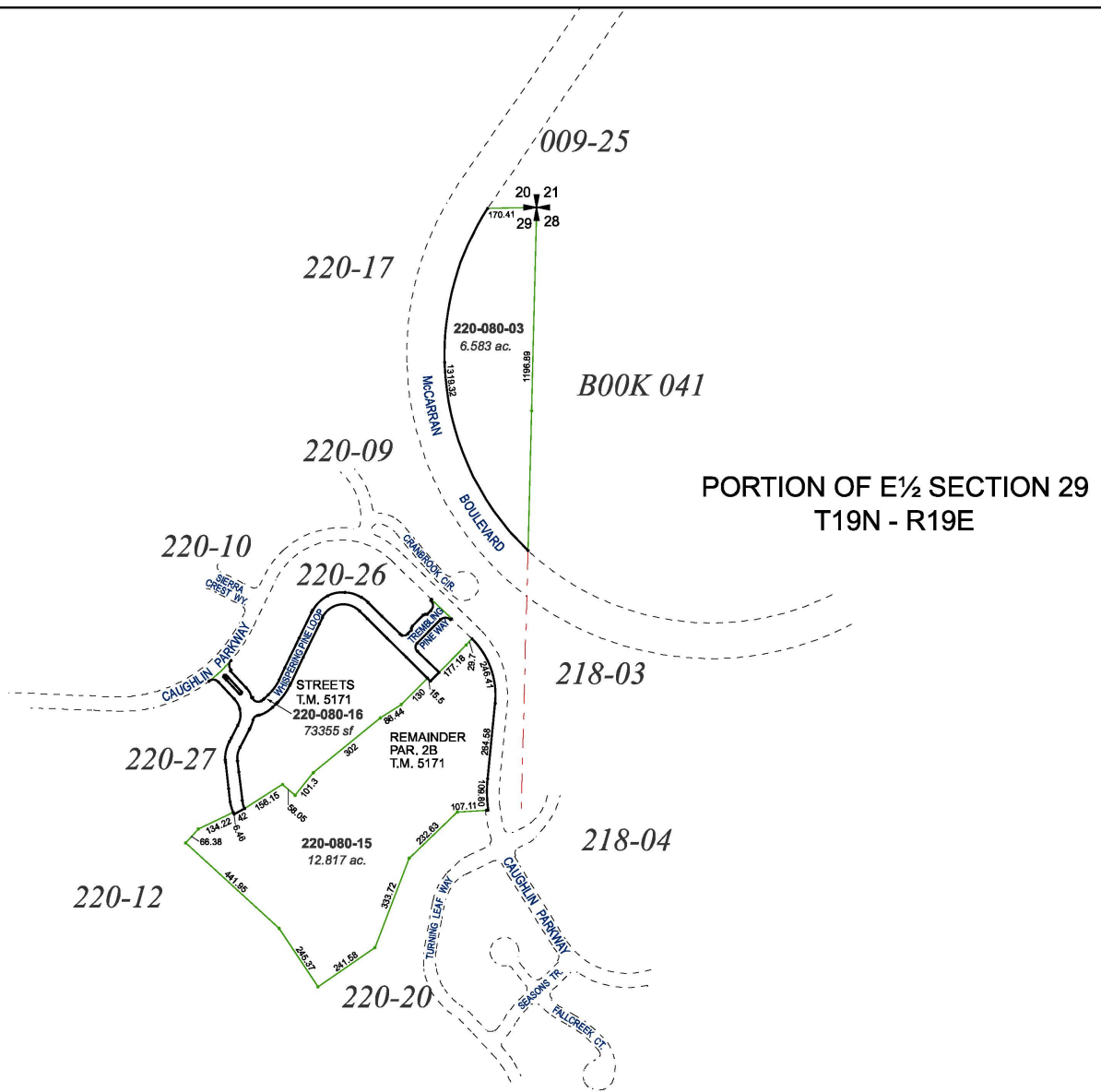
created by: KSB 4/20/2010

last updated: EMG 8/9/16

area previously shown on map(s)

041-02

NOTE: This map was prepared for the use of the Washoe County Assessor for assessment and illustrative purposes only. It does not represent a survey of the premises. No liability is assumed as to the sufficiency or accuracy of the data delineated hereon.



PORTION OF E 1/2 SECTION 29
T19N - R19E

BOOK 041