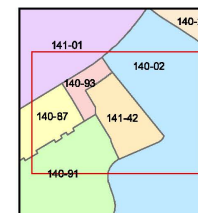
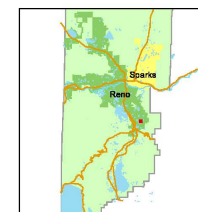


Assessor's Map Number  
**141-42**

STATE OF NEVADA  
**WASHOE COUNTY**  
ASSESSOR'S OFFICE  
Michael E. Clark, Assessor  
1001 East Ninth Street  
Building D  
Reno, Nevada 89512  
(775) 328-2231



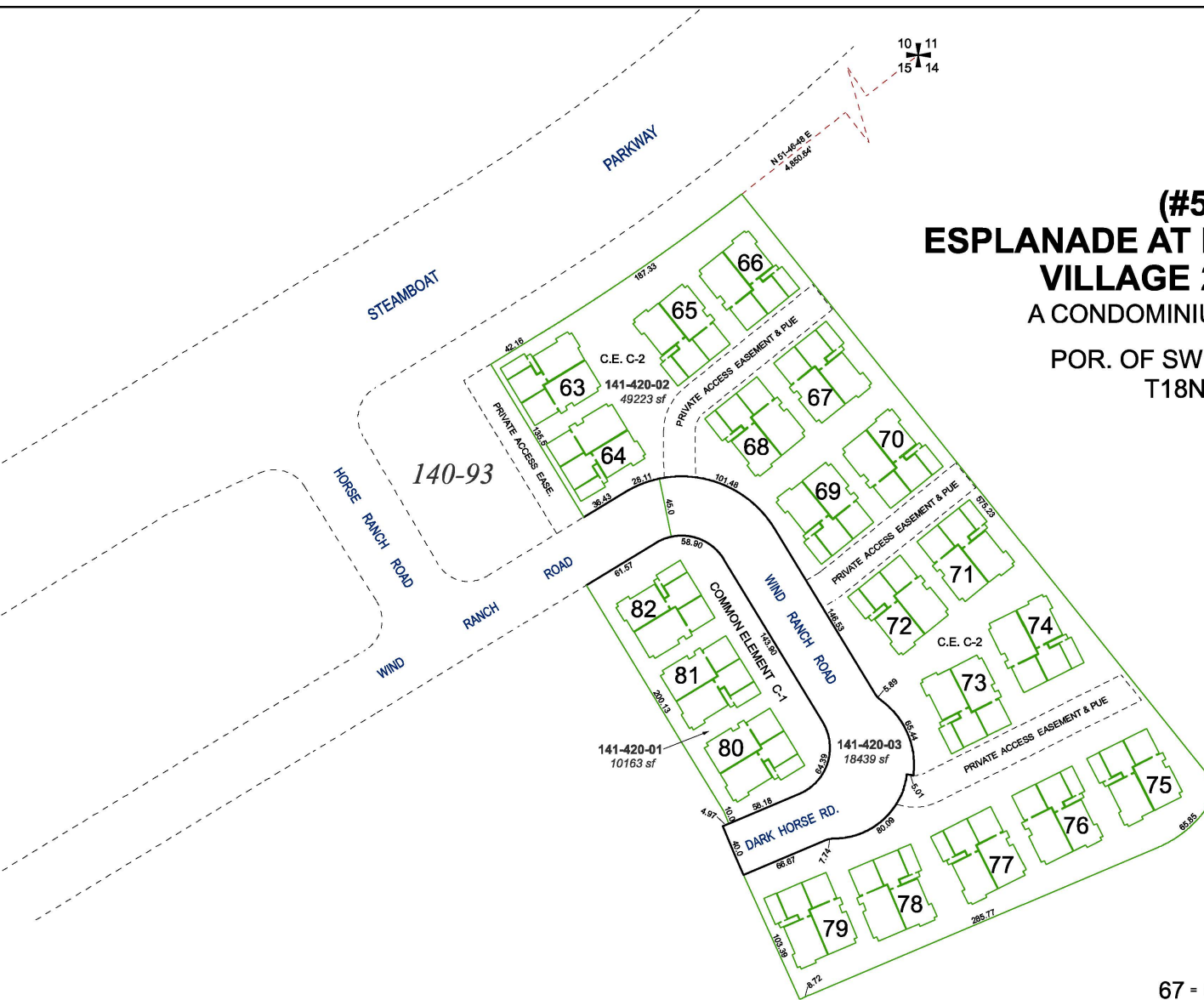
Feet  
0 20 40 60 80  
1 inch = 80 feet



created by: KSB 11/23/2015  
last updated: \_\_\_\_\_  
area previously shown on map(s)  
140-93

NOTE: This map was prepared for the use of the Washoe County Assessor for assessment and illustrative purposes only. It does not represent a survey of the premises. No liability is assumed as to the sufficiency or accuracy of the data delineated hereon.

**(#5138)**  
**ESPLANADE AT DAMONTE RANCH**  
**VILLAGE 24-C UNIT 2**  
A CONDOMINIUM SUBDIVISION  
POR. OF SW ¼ SECTION 15  
T18N - R20E



**67** = BUILDING NUMBER  
C.E. = COMMON ELEMENT

NOTES:  
- See PAGES 141-42-S1 & 141-42-S2 for UNIT DETAILS  
- See PAGES 141-42-S3 thru 141-42-S6 for UNITS