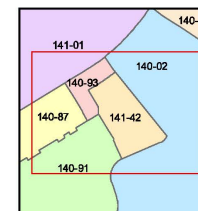
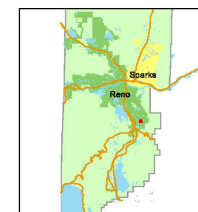
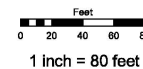


Assessor's Map Number
140-93

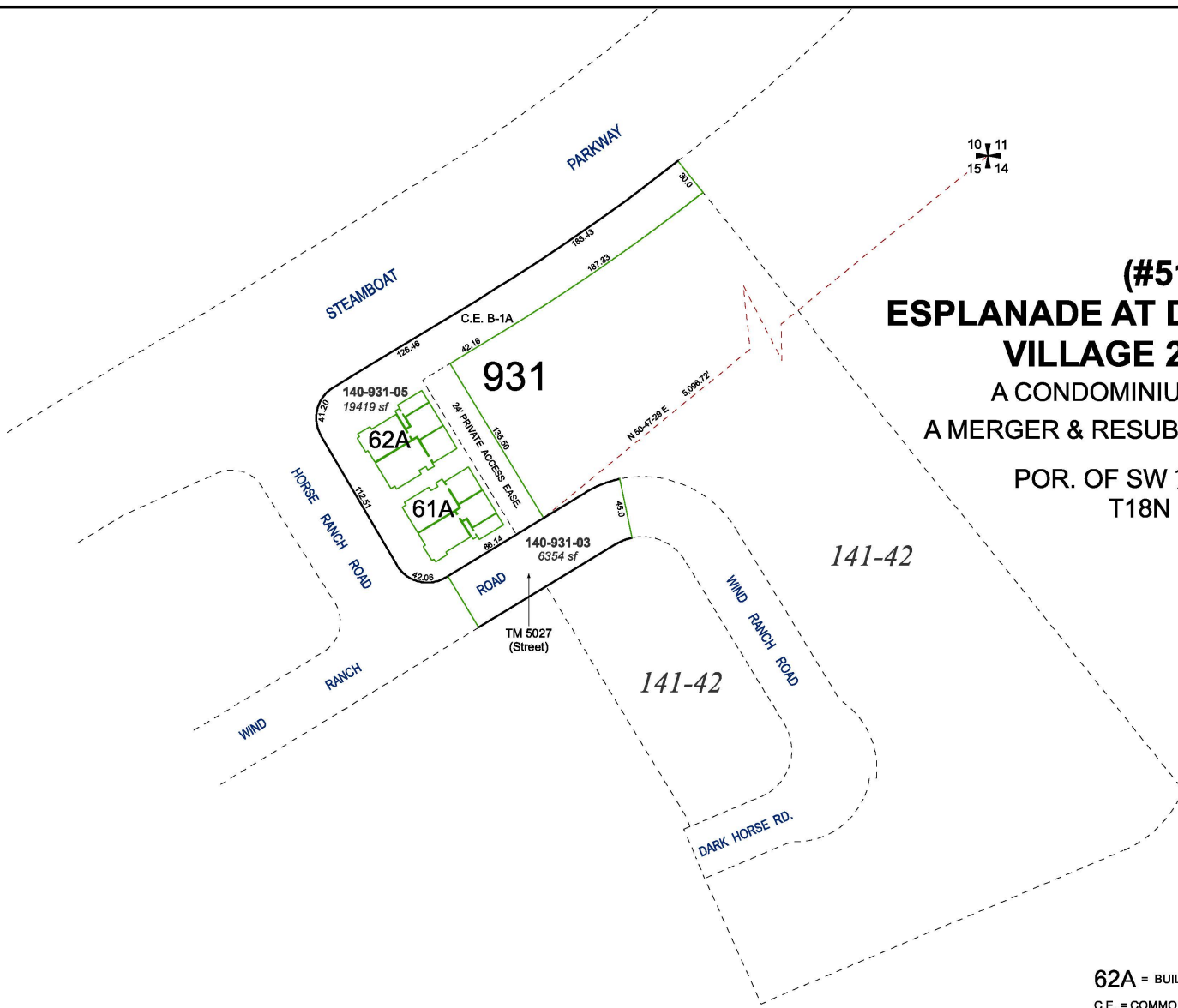
STATE OF NEVADA
WASHOE COUNTY
ASSESSOR'S OFFICE
Michael E. Clark, Assessor
1001 East Ninth Street
Building D
Reno, Nevada 89512
(775) 328-2231



created by: NLH 08/23/2012
last updated: KSB 7/12/16
area previously shown on map(s)
140-91

NOTE: This map was prepared for the use of the Washoe County Assessor for assessment and illustrative purposes only. It does not represent a survey of the premises. No liability is assumed as to the sufficiency or accuracy of the data delineated hereon.

(#5170)
ESPLANADE AT DAMONTE RANCH
VILLAGE 24-C UNIT 1
A CONDOMINIUM SUBDIVISION
A MERGER & RESUBDIVISION OF TM 5027
POR. OF SW ¼ SECTION 15
T18N - R20E



62A = BUILDING NUMBER

C.E. = COMMON ELEMENT

NOTES:
- See PAGE 140-93-S1 for UNIT DETAILS
- See PAGES 140-93-S2 thru 140-93-S3 for UNITS