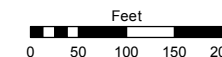


Assessor's Map Number

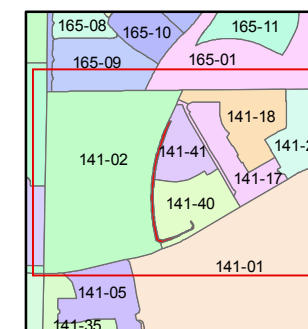
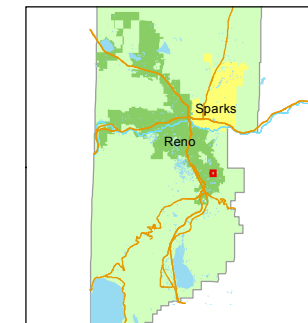
141-39

STATE OF NEVADA
WASHOE COUNTY
ASSESSOR'S OFFICE
Michael E. Clark, Assessor

1001 East Ninth Street
Building D
Reno, Nevada 89512
(775) 328-2231



1 inch = 200 feet



created by: EMG 8/28/2015

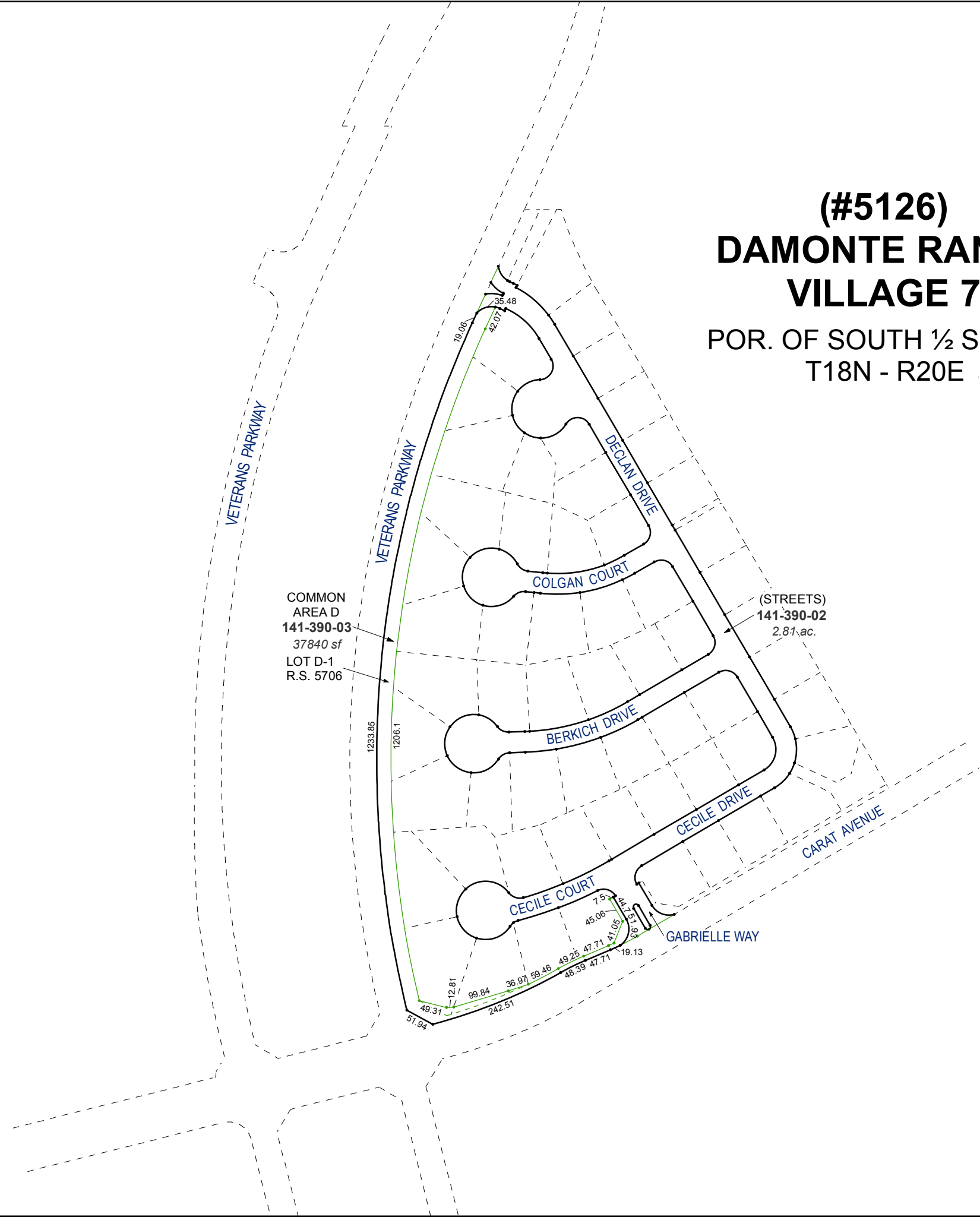
last updated: EMG 3/1/16

area previously shown on map(s)

141-02

NOTE: This map was prepared for the use of the Washoe County Assessor for assessment and illustrative purposes only. It does not represent a survey of the premises. No liability is assumed as to the sufficiency or accuracy of the data delineated hereon.

(#5126)
DAMONTE RANCH
VILLAGE 7
POR. OF SOUTH 1/2 SEC. 10
T18N - R20E



COMMON
AREA D
141-390-03
37840 sf
LOT D-1
R.S. 5706

(STREETS)
141-390-02
2.81 ac.